

Our Ref: MV/ 15B901605

06 September 2021

London Borough of Merton  
[future.merton@merton.gov.uk](mailto:future.merton@merton.gov.uk)  
**via email only**



Dear Sir / Madam  
**Local Plan Stage 3 Consultation  
August – September 2021  
Representations on behalf of National Grid**

National Grid has appointed Avison Young to review and respond to local planning authority Development Plan Document consultations on its behalf. We are instructed by our client to submit the following representation with regard to the current consultation on the above document.

#### **About National Grid**

National Grid Electricity Transmission plc (NGET) owns and maintains the electricity transmission system in England and Wales. The energy is then distributed to the electricity distribution network operators, so it can reach homes and businesses.

National Grid Gas plc (NGG) owns and operates the high-pressure gas transmission system across the UK. In the UK, gas leaves the transmission system and enters the UK's four gas distribution networks where pressure is reduced for public use.

National Grid Ventures (NGV) is separate from National Grid's core regulated businesses. NGV develop, operate and invest in energy projects, technologies, and partnerships to help accelerate the development of a clean energy future for consumers across the UK, Europe and the United States.

#### **Proposed development sites crossed or in close proximity to National Grid assets:**

Following a review of the above Development Plan Document, we have identified that one or more proposed development sites are crossed or in close proximity to National Grid assets.

Details of the sites affecting National Grid assets are provided below.

**Electricity Transmission**

Development Plan Document Site Reference	Asset Description
CW5 - Priory Retail Park	YYU ROUTE: 275Kv Overhead Transmission Line route: BEDDINGTON - WIMBLEDON 1
Mi1 - Benedict Wharf	YYU ROUTE: 275Kv Overhead Transmission Line route: BEDDINGTON - WIMBLEDON 1
CW2 – Car Park South of Britannia Point	YYU ROUTE: 275Kv Overhead Transmission Line route: BEDDINGTON - WIMBLEDON 1
Wi12 – Wimbledon Stadium and Volante Site	33Kv Underground Cable route: EARLSFIELD RAIL FEEDERS 427, 440 & 443 - SECTION3 33Kv Underground Cable route: WIMBLEDON 33KV D S/S Electrical Substation: WIMBLEDON 132KV

A plan showing details of the site locations and details of National Grid's assets is attached to this letter. Please note that this plan is illustrative only.

Please also see attached information outlining further guidance on development close to National Grid assets.

**Further Advice**

National Grid is happy to provide advice and guidance to the Council concerning their networks. If we can be of any assistance to you in providing informal comments in confidence during your policy development, please do not hesitate to contact us.

To help ensure the continued safe operation of existing sites and equipment and to facilitate future infrastructure investment, National Grid wishes to be involved in the preparation, alteration and review of plans and strategies which may affect their assets. Please remember to consult National Grid on any Development Plan Document (DPD) or site-specific proposals that could affect National Grid's assets. We would be grateful if you could check that our details as shown below are included on your consultation database:

**Matt Verlander, Director**

[nationalgrid.uk@avisonyoung.com](mailto:nationalgrid.uk@avisonyoung.com)

Avison Young  
Central Square South  
Orchard Street  
Newcastle upon Tyne  
NE1 3AZ

**Spencer Jefferies, Town Planner**

[box.landandacquisitions@nationalgrid.com](mailto:box.landandacquisitions@nationalgrid.com)

National Grid  
National Grid House  
Warwick Technology Park  
Gallows Hill  
Warwick, CV34 6DA

If you require any further information in respect of this letter, then please contact us.

Yours faithfully,



A handwritten signature in black ink, appearing to read "Matt Verlander".

**Matt Verlander MRTPI**

**Director**

**0191 269 0094**

**[matt.verlander@avisonyoung.com](mailto:matt.verlander@avisonyoung.com)**

**For and on behalf of Avison Young**

## **Guidance on development near National Grid assets**

National Grid is able to provide advice and guidance to the Council concerning their networks and encourages high quality and well-planned development in the vicinity of its assets.

### Electricity assets

Developers of sites crossed or in close proximity to National Grid assets should be aware that it is National Grid policy to retain existing overhead lines in-situ, though it recognises that there may be exceptional circumstances that would justify the request where, for example, the proposal is of regional or national importance.

National Grid's *'Guidelines for Development near pylons and high voltage overhead power lines'* promote the successful development of sites crossed by existing overhead lines and the creation of well-designed places. The guidelines demonstrate that a creative design approach can minimise the impact of overhead lines whilst promoting a quality environment. The guidelines can be downloaded here: <https://www.nationalgridet.com/document/130626/download>

The statutory safety clearances between overhead lines, the ground, and built structures must not be infringed. Where changes are proposed to ground levels beneath an existing line then it is important that changes in ground levels do not result in safety clearances being infringed. National Grid can, on request, provide to developers detailed line profile drawings that detail the height of conductors, above ordnance datum, at a specific site.

National Grid's statutory safety clearances are detailed in their *'Guidelines when working near National Grid Electricity Transmission assets'*, which can be downloaded here: [www.nationalgridet.com/network-and-assets/working-near-our-assets](http://www.nationalgridet.com/network-and-assets/working-near-our-assets)

### Gas assets

High-Pressure Gas Pipelines form an essential part of the national gas transmission system and National Grid's approach is always to seek to leave their existing transmission pipelines in situ. Contact should be made with the Health and Safety Executive (HSE) in respect of sites affected by High-Pressure Gas Pipelines.

National Grid have land rights for each asset which prevents the erection of permanent/ temporary buildings, or structures, changes to existing ground levels, storage of materials etc. Additionally, written permission will be required before any works commence within the National Grid's 12.2m building proximity distance, and a deed of consent is required for any crossing of the easement.

National Grid's *'Guidelines when working near National Grid Gas assets'* can be downloaded here: [www.nationalgridgas.com/land-and-assets/working-near-our-assets](http://www.nationalgridgas.com/land-and-assets/working-near-our-assets)

### How to contact National Grid

If you require any further information in relation to the above and/or if you would like to check if National Grid's transmission networks may be affected by a proposed development, please contact:

Avison Young (UK) Limited registered in England and Wales number 6382509.  
Registered office, 3 Brindleyplace, Birmingham B1 2JB. Regulated by RICS



- National Grid's Plant Protection team: [plantprotection@nationalgrid.com](mailto:plantprotection@nationalgrid.com)

Cadent Plant Protection Team

Block 1

Brick Kiln Street

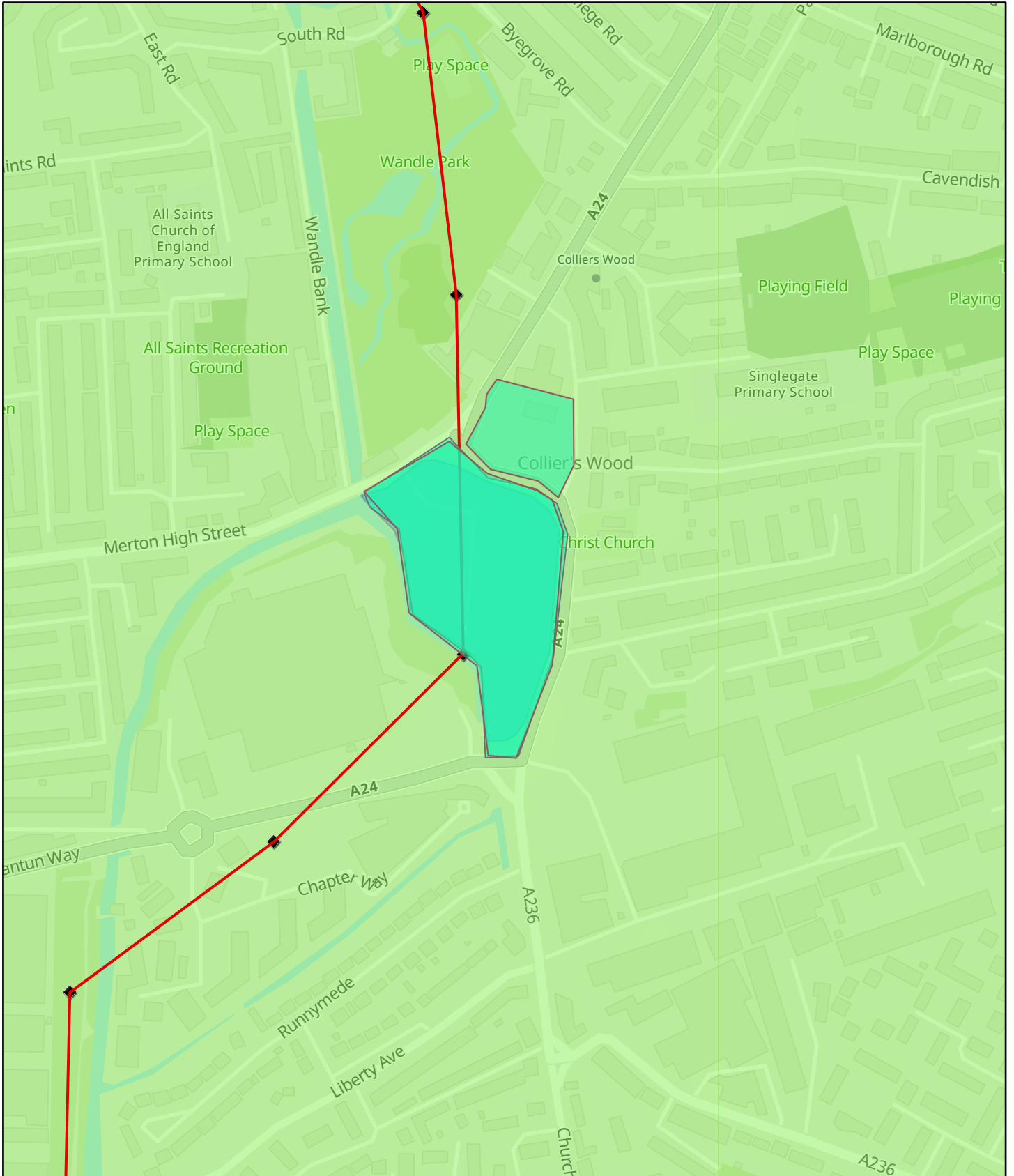
Hinckley

LE10 0NA

0800 688 588

or visit the website: <https://www.beforeyoudig.cadentgas.com/login.aspx>

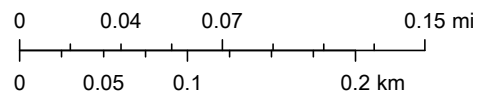
# CW2 and CW5



06/09/2021, 12:12:04

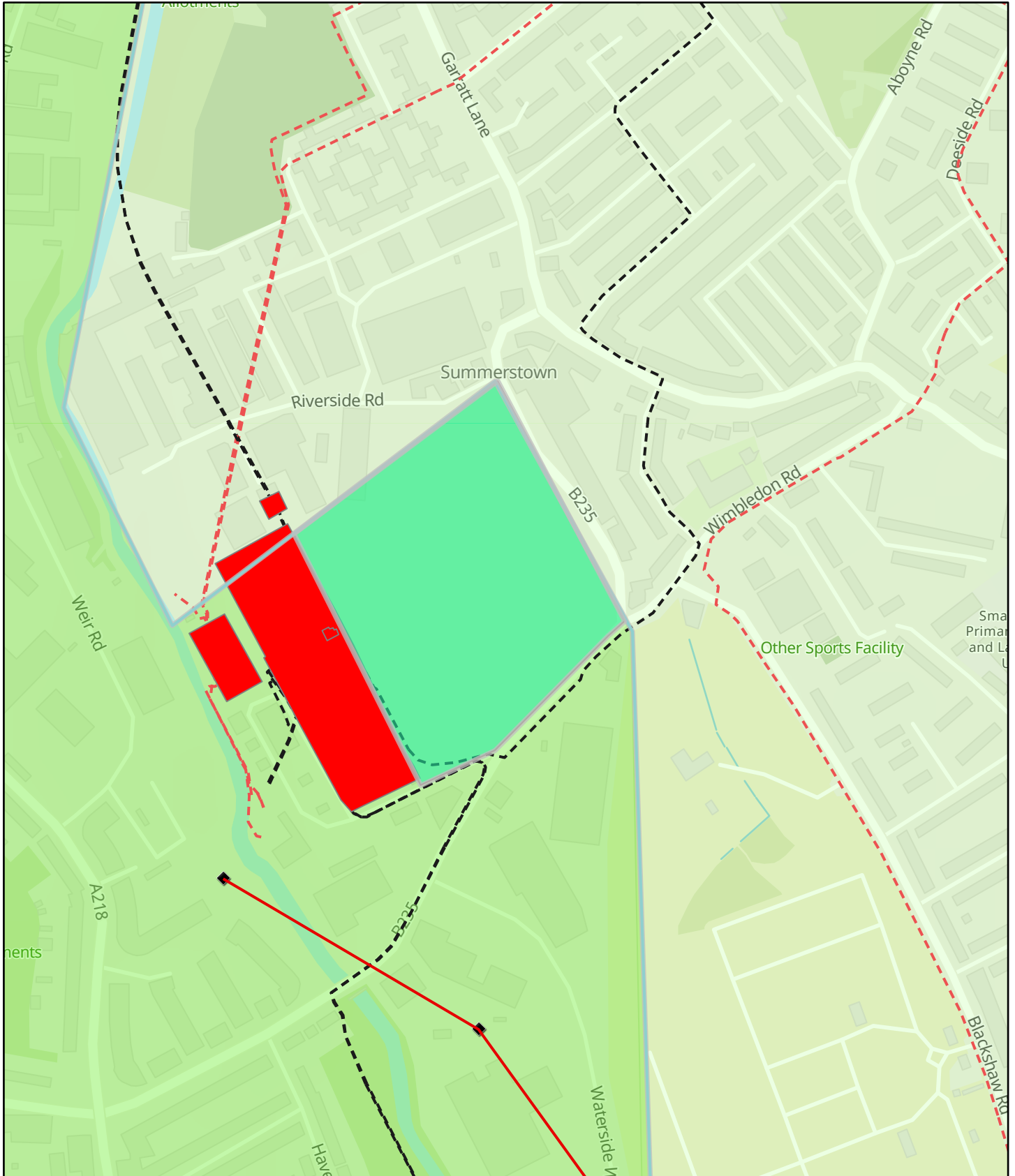
- Development\_Plan\_Monitoring\_Sites\_vw\_9270
- Development\_Plan\_Monitoring\_v2\_7386
- Archived\_Sites\_2848
- Electric\_Assets\_4020
- 275
- Electric\_Assets\_1587
- Development\_Plan\_Monitoring\_Consultations\_vw\_1604
- Development\_Plan\_Monitoring\_v2\_977\_5701
- Development\_Plan\_Monitoring\_v2\_977

1:4,504



Contains OS data © Crown Copyright and database right 2020  
 Contains data from OS Zoomstack, Contains OS data © Crown Copyright and database right 2019

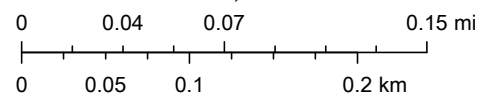
# Wi12 – Wimbledon Stadium and Volante Site



06/09/2021, 12:11:22

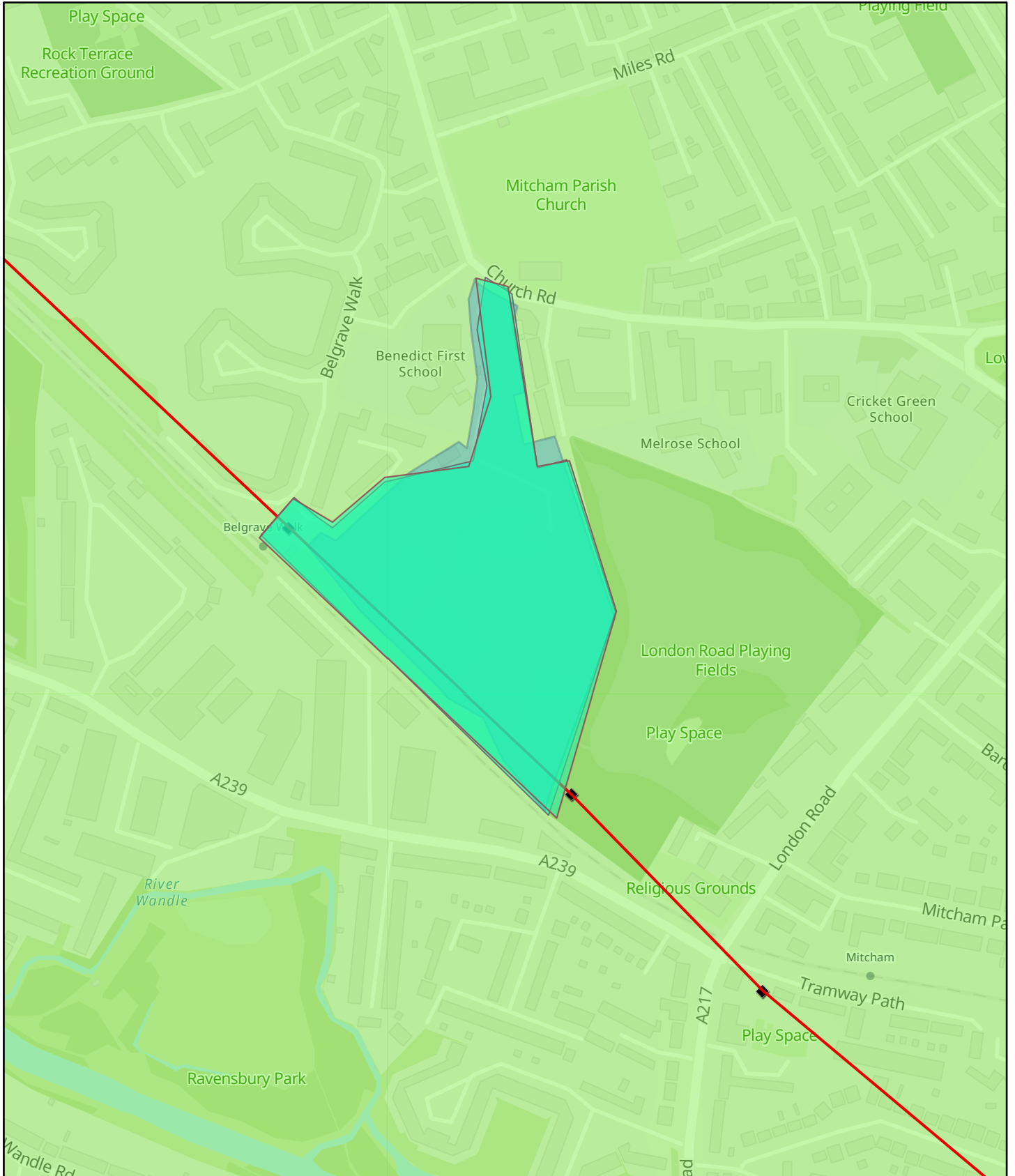
1:4,504

- |   |   |
|---|---|
| Development_Plan_Monitoring_Sites_vw_9270 | Electric_Assets_7634                              |
| Development_Plan_Monitoring_v2_7386       | 275   |
| Electric_Assets_4020                      | 132 & Below                                       |
| 275                                       | Development_Plan_Monitoring_Consultations_vw_1604 |
| Electric_Assets_1587                      | Development_Plan_Monitoring_v2_977_5701           |
| Electric_Assets_3956                      | Development_Plan_Monitoring_v2_977                |



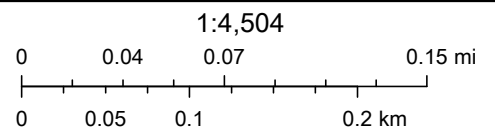
Contains OS data © Crown Copyright and database right 2020  
Contains data from OS Zoomstack, Contains OS data © Crown Copyright and database right 2019

# Mi1 - Benedict Wharf



06/09/2021, 12:12:48

- Development\_Plan\_Monitoring\_Sites\_vw\_9270
- Development\_Plan\_Monitoring\_v2\_7386
- Archived\_Sites\_2848
- Electric\_Assets\_4020
- 275
- Electric\_Assets\_1587
- Development\_Plan\_Monitoring\_Consultations\_vw\_1604
- Development\_Plan\_Monitoring\_v2\_977\_5701
- Development\_Plan\_Monitoring\_v2\_977



Contains OS data © Crown Copyright and database right 2020  
 Contains data from OS Zoomstack, Contains OS data © Crown Copyright and database right 2019